

55/150

DRAWING NUMBER

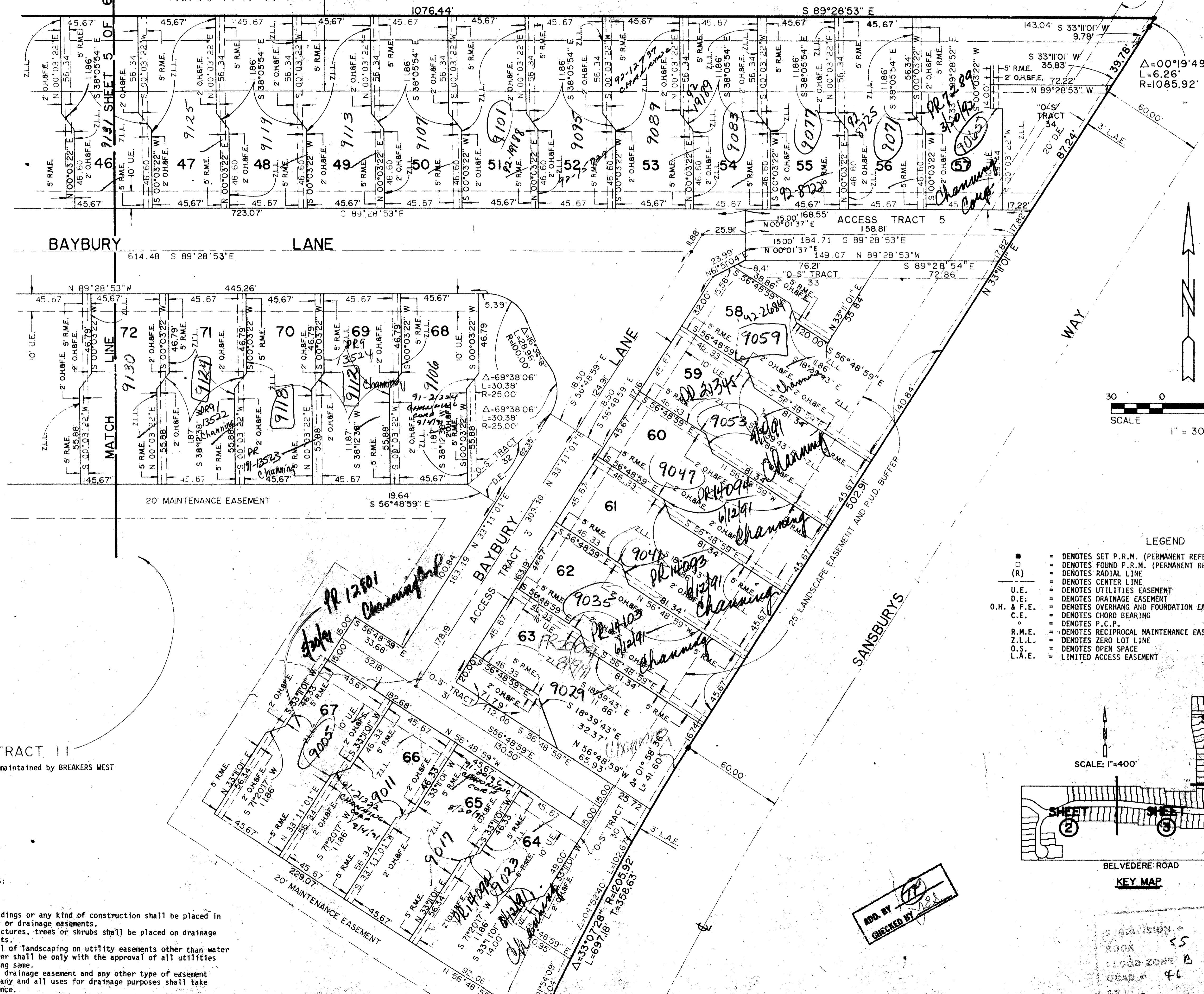
DRAWING NUMBER

DRAWING NUMBER

# "A PART OF A PLANNED UNIT DEVELOPMENT" BREAKERS WEST PLAT NO. 13 "THE COLONY" PALM BEACH COUNTY, FLORIDA

JANUARY 1987  
**Hutcheon Engineers**  
CIVIL ENGINEERS & SURVEYORS  
BELLE GLADE WEST PALM BEACH STUART  
SHEET 6 OF 6 SHEETS

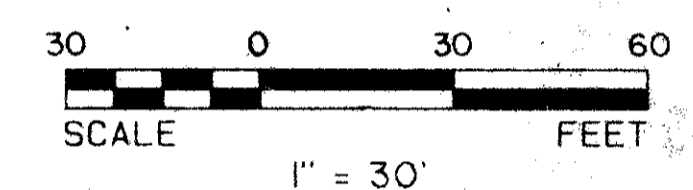
# 150



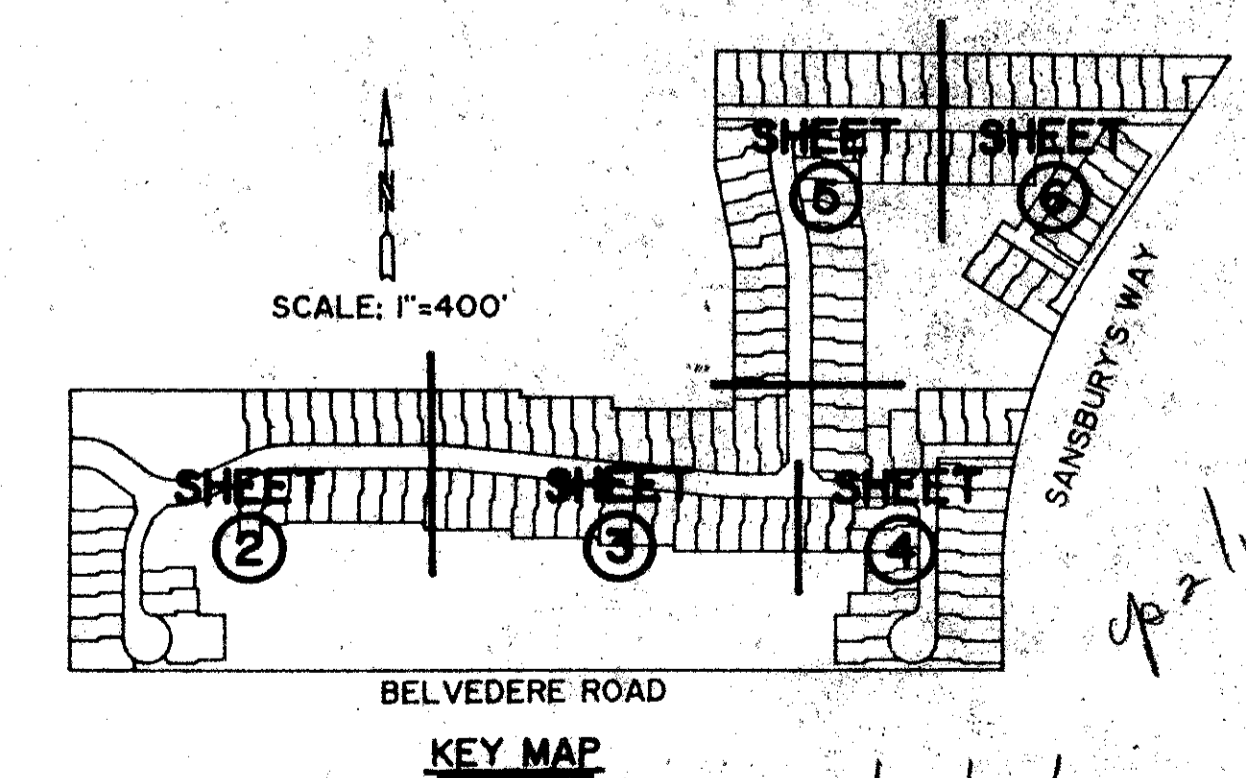
"W-M" TRACT II  
This Tract shall be maintained by BREAKERS WEST ASSOCIATION, INC.

- SURVEYORS NOTES:**
- Easements:
    - No buildings or any kind of construction shall be placed in utility or drainage easements.
    - No structures, trees or shrubs shall be placed on drainage easements.
    - Approval of landscaping on utility easements other than water and sewer shall be only with the approval of all utilities occupying same.
    - Where a drainage easement and any other type of easement cross, any and all uses for drainage purposes shall take precedence.
  - Bearings shown hereon are consistent with the bearings shown on BREAKERS WEST PLAT NO. 2, Plat Book 36, Pages 31 thru 35.

Δ=05°44'24"  
R=205.92'  
L=120.81'  
TO NORTH LINE  
OF LOT 96



- LEGEND**
- DENOTES SET P.R.M. (PERMANENT REFERENCE MONUMENT) LB-3881
  - DENOTES FOUND P.R.M. (PERMANENT REFERENCE MONUMENT) LB-3881
  - (R) DENOTES RADIAL LINE
  - DENOTES CENTER LINE
  - U.E. DENOTES UTILITIES EASEMENT
  - D.E. DENOTES DRAINAGE EASEMENT
  - O.H. & F.E. DENOTES OVERHANG AND FOUNDATION EASEMENT
  - C.E. DENOTES CHORD BEARING
  - DENOTES P.C.P.
  - R.M.E. DENOTES RECIPROCAL MAINTENANCE EASEMENT
  - Z.L.L. DENOTES ZERO LOT LINE
  - O.S. DENOTES OPEN SPACE
  - L.A.E. DENOTES LIMITED ACCESS EASEMENT



ADD BY [Signature]  
CHECKED BY [Signature]

**BREAKERS WEST PLAT No. 13** 55/150 *PR 13* 0217-010  
30/31/43/42  
Breakers West  
55 PAGE 150  
LOAD ZONE B  
QUAD 46  
3344